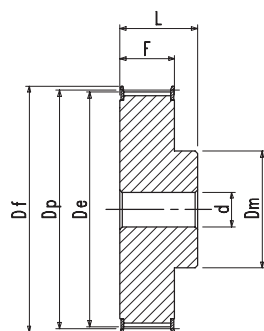
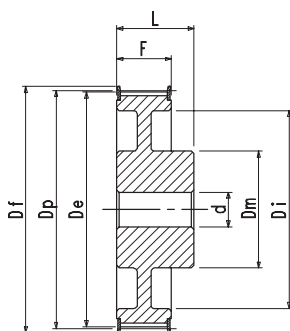


## POLIAS XH 200

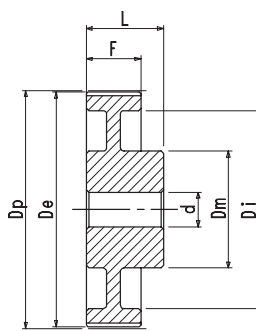
Faça download de nossos desenhos padrões.



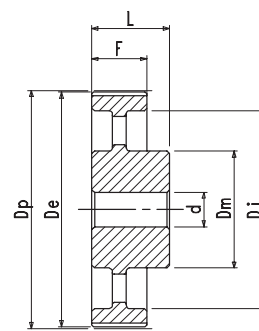
tipo 6F



tipo 6WF



tipo 6W

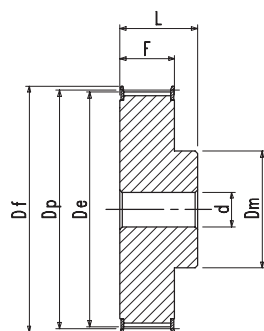


tipo 6A

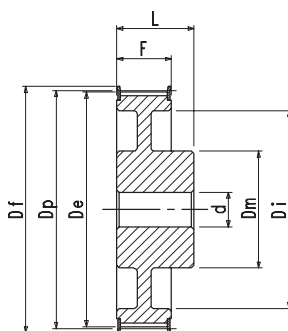
XH 200 Referência	Número de Dentes	Dp	De	Df	Dm	Di	F	L	d	Peso kg
18 XH 200-6F	18	127,34	124,55	138	100	-	63,2	80	24	5,800
19 XH 200-6F	19	134,41	131,62	146	100	-	63,2	80	24	6,700
20 XH 200-6F	20	141,49	138,69	154	100	-	63,2	80	24	7,100
21 XH 200-6F	21	148,56	145,77	160	110	-	63,2	80	24	8,000
22 XH 200-6F	22	155,64	152,84	168	110	-	63,2	80	24	8,800
24 XH 200-6F	24	169,79	166,99	183	120	-	63,2	80	24	10,400
25 XH 200-6F	25	176,86	174,07	188	120	-	63,2	80	24	11,300
26 XH 200-6F	26	183,94	181,14	198	120	-	63,2	80	24	12,200
27 XH 200-6F	27	191,01	188,22	200	120	-	63,2	80	24	13,000
28 XH 200-6F	28	198,08	195,29	211	150	-	63,2	80	24	15,000
30 XH 200-6F	30	212,23	209,44	226	150	-	63,2	80	24	16,800
32 XH 200-6WF	32	226,38	223,59	240	150	194	63,2	80	24	14,500
34 XH 200-6WF	34	240,53	237,74	256	150	198	63,2	80	24	21,000
38 XH 200-6WF	38	268,83	266,03	286	150	227	63,2	100	28	28,000
40 XH 200-6WF	40	282,98	280,18	296	150	241	63,2	100	28	22,500
46 XH 200-6W	46	325,42	322,63	-	150	283	65,1	100	28	26,500
48 XH 200-6W	48	339,57	336,78	-	150	297	65,1	100	28	26,800
58 XH 200-6W	58	410,32	407,52	-	150	368	65,1	100	28	37,400
60 XH 200-6W	60	424,47	421,67	-	150	382	65,1	100	28	31,500
70 XH 200-6A	70	495,21	492,42	-	190	453	65,1	100	28	41,100
72 XH 200-6A	72	509,36	506,56	-	190	467	65,1	100	28	43,000
78 XH 200-6A	78	551,81	549,01	-	190	510	65,1	100	28	50,100
80 XH 200-6A	80	565,95	563,16	-	190	524	65,1	100	28	55,000
82 XH 200-6A	82	580,10	577,31	-	190	538	65,1	100	28	54,940
84 XH 200-6A	84	594,25	591,46	-	190	552	65,1	100	28	54,600
94 XH 200-6A	94	665,00	662,20	-	190	623	65,1	100	28	68,478
96 XH 200-6A	96	679,15	676,35	-	190	637	65,1	100	28	61,000
118 XH 200-6A	118	834,78	831,99	-	190	792	65,1	100	28	101,090
120 XH 200-6A	120	848,93	846,14	-	190	806	65,1	100	28	105,140

## POLIAS XH 300

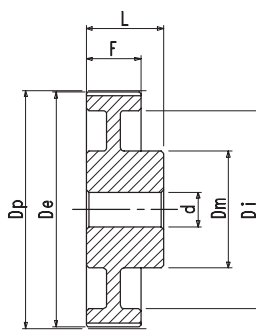
Faça download de nossos desenhos padrões.



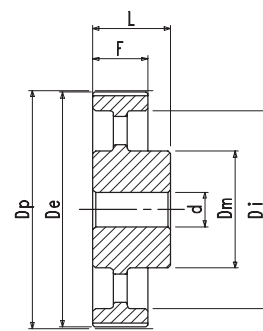
tipo 6F



tipo 6WF



tipo 6W



tipo 6A

XH 300 Referência	Número de Dentes	Dp	De	Df	Dm	Di	F	L	d	Peso kg
18 XH 300-6F	18	127,34	124,55	138	100	-	90,4	110	28	8,000
19 XH 300-6F	19	134,41	131,62	146	100	-	90,4	110	28	8,800
20 XH 300-6F	20	141,49	138,69	154	100	-	90,4	110	28	9,600
21 XH 300-6F	21	148,56	145,77	160	110	-	90,4	110	28	11,000
22 XH 300-6F	22	155,64	152,84	168	110	-	90,4	110	28	12,000
24 XH 300-6F	24	169,79	166,99	183	120	-	90,4	110	28	14,400
25 XH 300-6F	25	176,86	174,07	188	120	-	90,4	110	28	15,600
26 XH 300-6F	26	183,94	181,14	198	120	-	90,4	110	28	16,200
27 XH 300-6F	27	191,01	188,22	200	120	-	90,4	110	28	18,200
28 XH 300-6F	28	198,08	195,29	211	150	-	90,4	110	28	20,400
30 XH 300-6F	30	212,23	209,44	226	150	-	90,4	110	28	23,000
32 XH 300-6F	32	226,38	223,59	240	150	-	90,4	110	28	26,500
34 XH 300-6WF	34	240,53	237,74	256	150	198	90,4	110	28	29,000
38 XH 300-6WF	38	268,83	266,03	286	150	227	90,4	120	32	37,500
40 XH 300-6WF	40	282,98	280,18	296	150	241	90,4	120	32	29,000
46 XH 300-6W	46	325,42	322,63	-	150	283	92,1	120	32	32,000
48 XH 300-6W	48	339,57	336,78	-	150	297	92,1	120	32	32,800
58 XH 300-6W	58	410,32	407,52	-	150	368	92,1	120	32	45,000
60 XH 300-6W	60	424,47	421,67	-	150	382	92,1	120	32	39,000
70 XH 300-6A	70	495,21	492,42	-	190	453	92,1	120	32	46,200
72 XH 300-6A	72	509,36	506,56	-	190	467	92,1	120	32	54,000
78 XH 300-6A	78	551,81	549,01	-	190	510	92,1	120	32	63,150
80 XH 300-6A	80	565,95	563,16	-	190	524	92,1	120	32	63,000
82 XH 300-6A	82	580,10	577,31	-	190	538	92,1	120	32	67,040
84 XH 300-6A	84	594,25	591,46	-	190	552	92,1	120	32	69,190
94 XH 300-6A	94	665,00	662,20	-	190	623	92,1	120	32	82,660
96 XH 300-6A	96	679,15	676,35	-	190	637	92,1	120	32	80,400
118 XH 300-6A	118	834,78	831,99	-	190	792	92,1	120	32	120,500
120 XH 300-6A	120	848,93	846,14	-	190	806	92,1	120	32	125,290