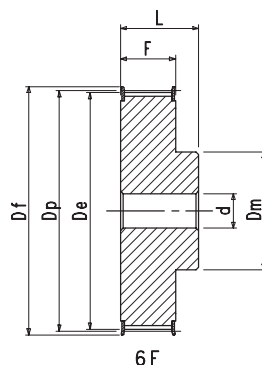
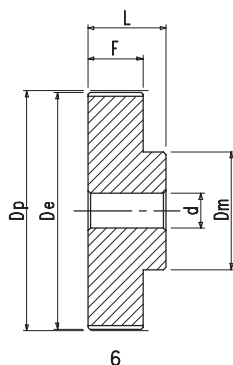


POLIAS T5 10

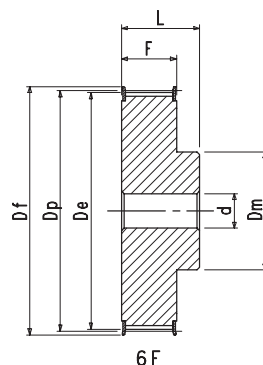
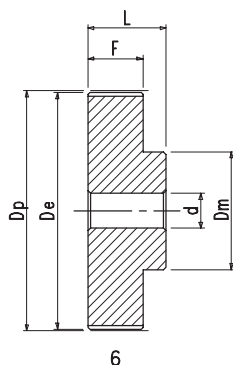
Faça download de nossos desenhos padrões.



T5 10 Referência	Número de Dentes	Dp	De	Df	Dm	F	L	d	Peso kg
21 T 5/10-6F	10	15,92	15,05	19,5	8	15	21	—	0,010
21 T 5/12-6F	12	19,10	18,25	23,0	11	15	21	—	0,020
21 T 5/14-6F	14	22,28	21,45	25,0	14	15	21	—	0,020
21 T 5/15-6F	15	23,87	23,05	28,0	16	15	21	6	0,030
21 T 5/16-6F	16	25,46	24,60	32,0	18	15	21	6	0,030
21 T 5/18-6F	18	28,65	27,80	32,0	20	15	21	6	0,030
21 T 5/19-6F	19	30,24	29,40	36,0	22	15	21	6	0,040
21 T 5/20-6F	20	31,83	31,00	36,0	23	15	21	6	0,040
21 T 5/22-6F	22	35,01	34,25	38,0	24	15	21	6	0,050
21 T 5/24-6F	24	38,20	37,40	42,0	26	15	21	6	0,060
21 T 5/25-6F	25	39,79	39,00	44,0	26	15	21	6	0,060
21 T 5/26-6F	26	41,38	40,60	44,0	26	15	21	6	0,060
21 T 5/27-6F	27	42,97	42,20	48,0	30	15	21	8	0,070
21 T 5/28-6F	28	44,56	43,75	48,0	32	15	21	8	0,070
21 T 5/30-6F	30	47,75	46,95	51,0	34	15	21	8	0,080
21 T 5/32-6F	32	50,93	50,10	54,0	38	15	21	8	0,090
21 T 5/36-6F	36	57,30	56,45	63,0	38	15	21	8	0,120
21 T 5/40-6F	40	63,66	62,85	66,0	40	15	21	8	0,140
21 T 5/42-6F	42	66,84	66,00	71,0	40	15	21	8	0,180
21 T 5/44-6	44	70,03	69,20	—	45	15	21	8	0,190
21 T 5/48-6	48	76,39	75,55	—	50	15	21	8	0,200
21 T 5/60-6	60	95,49	94,65	—	65	15	21	8	0,310

POLIAS T5 25

Faça download de nossos desenhos padrões.



T5 25 Referência	Número de Dentes	Dp	De	Df	Dm	F	L	d	Peso kg
36 T 5/10-6F	10	15,92	15,05	19,5	8	30	36	—	0,020
36 T 5/12-6F	12	19,10	18,25	23,0	11	30	36	—	0,030
36 T 5/14-6F	14	22,28	21,45	25,0	14	30	36	—	0,040
36 T 5/15-6F	15	23,87	23,05	28,0	16	30	36	6	0,040
36 T 5/16-6F	16	25,46	24,60	32,0	18	30	36	6	0,042
36 T 5/18-6F	18	28,65	27,80	32,0	20	30	36	6	0,060
36 T 5/19-6F	19	30,24	29,40	36,0	22	30	36	6	0,070
36 T 5/20-6F	20	31,83	31,00	36,0	23	30	36	6	0,080
36 T 5/22-6F	22	35,01	34,25	38,0	24	30	36	6	0,080
36 T 5/24-6F	24	38,20	37,40	42,0	26	30	36	8	0,110
36 T 5/25-6F	25	39,79	39,00	44,0	26	30	36	8	0,120
36 T 5/26-6F	26	41,38	40,60	44,0	26	30	36	8	0,120
36 T 5/27-6F	27	42,97	42,20	48,0	30	30	36	8	0,130
36 T 5/28-6F	28	44,56	43,75	48,0	32	30	36	8	0,130
36 T 5/30-6F	30	47,75	46,95	51,0	34	30	36	8	0,150
36 T 5/32-6F	32	50,93	50,10	54,0	38	30	36	8	0,180
36 T 5/36-6F	36	57,30	56,45	63,0	38	30	36	8	0,230
36 T 5/40-6F	40	63,66	62,85	66,0	40	30	36	8	0,280
36 T 5/42-6F	42	66,84	66,00	71,0	40	30	36	8	0,290
36 T 5/44-6	44	70,03	69,20	—	45	30	36	8	0,320
36 T 5/48-6	48	76,39	75,55	—	50	30	36	8	0,400
36 T 5/60-6	60	95,49	94,65	—	65	30	36	8	0,620