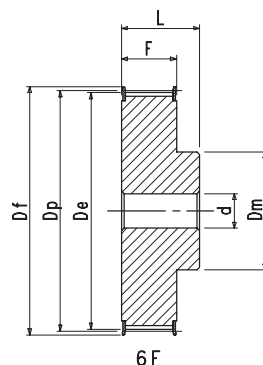
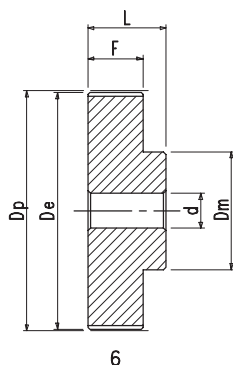


POLIAS T10 16

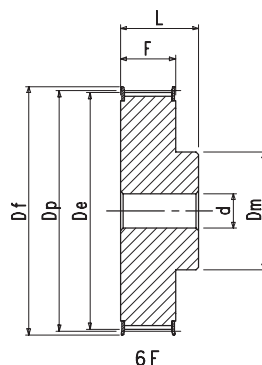
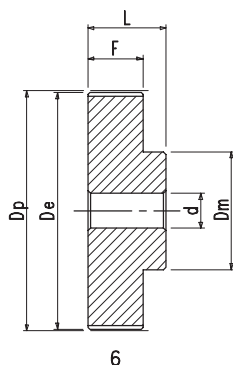
Faça download de nossos desenhos padrões.



| T10 16 Referência | Número de Dentes | Dp | De | Df | Dm | F | L | d | Peso kg |
|----------------------|---------------------|--------|--------|-----|-----|----|----|----|------------|
| 31 T 10/12-6F | 12 | 38,20 | 36,35 | 42 | 28 | 21 | 31 | 6 | 0,080 |
| 31 T 10/14-6F | 14 | 44,56 | 42,70 | 48 | 32 | 21 | 31 | 8 | 0,100 |
| 31 T 10/15-6F | 15 | 47,75 | 45,90 | 51 | 32 | 21 | 31 | 8 | 0,120 |
| 31 T 10/16-6F | 16 | 50,93 | 49,05 | 54 | 35 | 21 | 31 | 8 | 0,130 |
| 31 T 10/18-6F | 18 | 57,30 | 55,45 | 60 | 40 | 21 | 31 | 8 | 0,170 |
| 31 T 10/19-6F | 19 | 60,48 | 58,60 | 66 | 44 | 21 | 31 | 8 | 0,190 |
| 31 T 10/20-6F | 20 | 63,66 | 61,80 | 66 | 46 | 21 | 31 | 8 | 0,210 |
| 31 T 10/22-6F | 22 | 70,03 | 68,15 | 75 | 52 | 21 | 31 | 8 | 0,260 |
| 31 T 10/24-6F | 24 | 76,39 | 74,55 | 83 | 58 | 21 | 31 | 8 | 0,290 |
| 31 T 10/25-6F | 25 | 79,58 | 77,70 | 83 | 60 | 21 | 31 | 8 | 0,310 |
| 31 T 10/26-6F | 26 | 82,76 | 80,90 | 87 | 60 | 21 | 31 | 8 | 0,360 |
| 31 T 10/27-6F | 27 | 85,94 | 84,10 | 91 | 60 | 21 | 31 | 8 | 0,370 |
| 31 T 10/28-6F | 28 | 89,13 | 87,25 | 93 | 60 | 21 | 31 | 8 | 0,400 |
| 31 T 10/30-6F | 30 | 95,49 | 93,65 | 97 | 60 | 21 | 31 | 8 | 0,440 |
| 31 T 10/32-6F | 32 | 101,86 | 100,00 | 106 | 65 | 21 | 31 | 10 | 0,490 |
| 31 T 10/36-6F | 36 | 114,59 | 112,75 | 119 | 70 | 21 | 31 | 10 | 0,620 |
| 31 T 10/40-6F | 40 | 127,32 | 125,45 | 131 | 80 | 21 | 31 | 10 | 0,770 |
| 31 T 10/44-6 | 44 | 140,06 | 138,20 | — | 88 | 21 | 31 | 10 | 1,000 |
| 31 T 10/48-6 | 48 | 152,79 | 150,95 | — | 95 | 21 | 31 | 16 | 1,090 |
| 31 T 10/60-6 | 60 | 190,99 | 189,10 | — | 110 | 21 | 31 | 16 | 1,700 |

POLIAS T10 25

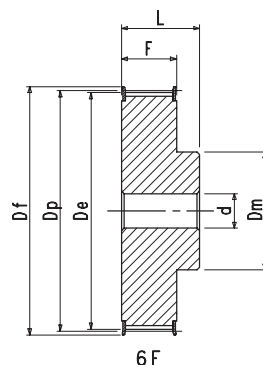
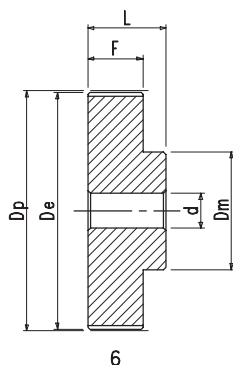
Faça download de nossos desenhos padrões.



| T10 25 Referência | Número de Dentes | Dp | De | Df | Dm | F | L | d | Peso kg |
|----------------------|---------------------|--------|--------|-----|-----|----|----|----|------------|
| 40 T 10/12-6F | 12 | 38,20 | 36,35 | 42 | 28 | 30 | 40 | 6 | 0,100 |
| 40 T 10/14-6F | 14 | 44,56 | 42,70 | 48 | 32 | 30 | 40 | 8 | 0,140 |
| 40 T 10/15-6F | 15 | 47,75 | 45,90 | 51 | 32 | 30 | 40 | 8 | 0,150 |
| 40 T 10/16-6F | 16 | 50,93 | 49,05 | 54 | 35 | 30 | 40 | 8 | 0,180 |
| 40 T 10/18-6F | 18 | 57,30 | 55,45 | 60 | 40 | 30 | 40 | 8 | 0,230 |
| 40 T 10/19-6F | 19 | 60,48 | 58,60 | 66 | 44 | 30 | 40 | 8 | 0,250 |
| 40 T 10/20-6F | 20 | 63,66 | 61,80 | 66 | 46 | 30 | 40 | 8 | 0,280 |
| 40 T 10/22-6F | 22 | 70,03 | 68,15 | 75 | 52 | 30 | 40 | 8 | 0,340 |
| 40 T 10/24-6F | 24 | 76,39 | 74,55 | 83 | 58 | 30 | 40 | 8 | 0,390 |
| 40 T 10/25-6F | 25 | 79,58 | 77,70 | 83 | 60 | 30 | 40 | 8 | 0,420 |
| 40 T 10/26-6F | 26 | 82,76 | 80,90 | 87 | 60 | 30 | 40 | 8 | 0,480 |
| 40 T 10/27-6F | 27 | 85,94 | 84,10 | 91 | 60 | 30 | 40 | 8 | 0,540 |
| 40 T 10/28-6F | 28 | 89,13 | 87,25 | 93 | 60 | 30 | 40 | 8 | 0,540 |
| 40 T 10/30-6F | 30 | 95,49 | 93,65 | 97 | 60 | 30 | 40 | 8 | 0,640 |
| 40 T 10/32-6F | 32 | 101,86 | 100,00 | 106 | 65 | 30 | 40 | 10 | 0,700 |
| 40 T 10/36-6F | 36 | 114,59 | 112,75 | 119 | 70 | 30 | 40 | 10 | 0,880 |
| 40 T 10/40-6F | 40 | 127,32 | 125,45 | 131 | 80 | 30 | 40 | 10 | 1,070 |
| 40 T 10/44-6 | 44 | 140,06 | 138,20 | — | 88 | 30 | 40 | 10 | 1,350 |
| 40 T 10/48-6 | 48 | 152,79 | 150,95 | — | 95 | 30 | 40 | 16 | 1,520 |
| 40 T 10/60-6 | 60 | 190,99 | 189,10 | — | 110 | 30 | 40 | 16 | 2,340 |

POLIAS T10 32

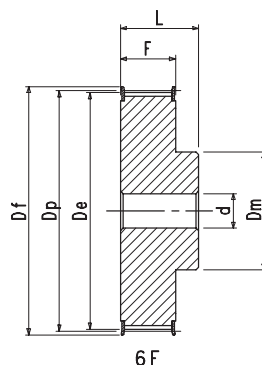
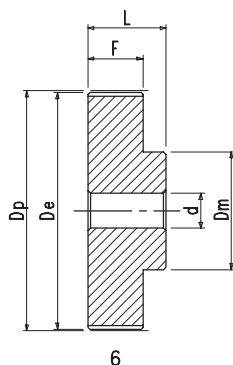
Faça download de nossos desenhos padrões.



| T10 32 Referência | Número de Dentes | Dp | De | Df | Dm | F | L | d | Peso kg |
|----------------------|---------------------|--------|--------|-----|-----|----|----|----|------------|
| 47 T 10/18-6F | 18 | 57,30 | 55,45 | 60 | 40 | 37 | 47 | 10 | 0,260 |
| 47 T 10/19-6F | 19 | 60,48 | 58,60 | 66 | 44 | 37 | 47 | 10 | 0,290 |
| 47 T 10/20-6F | 20 | 63,66 | 61,80 | 66 | 46 | 37 | 47 | 12 | 0,330 |
| 47 T 10/22-6F | 22 | 70,03 | 68,15 | 75 | 52 | 37 | 47 | 12 | 0,400 |
| 47 T 10/24-6F | 24 | 76,39 | 74,55 | 83 | 58 | 37 | 47 | 12 | 0,480 |
| 47 T 10/25-6F | 25 | 79,58 | 77,70 | 83 | 60 | 37 | 47 | 12 | 0,530 |
| 47 T 10/26-6F | 26 | 82,76 | 80,90 | 87 | 60 | 37 | 47 | 12 | 0,570 |
| 47 T 10/27-6F | 27 | 85,94 | 84,10 | 91 | 60 | 37 | 47 | 12 | 0,600 |
| 47 T 10/28-6F | 28 | 89,13 | 87,25 | 93 | 60 | 37 | 47 | 12 | 0,640 |
| 47 T 10/30-6F | 30 | 95,49 | 93,65 | 97 | 60 | 37 | 47 | 12 | 0,740 |
| 47 T 10/32-6F | 32 | 101,86 | 100,00 | 106 | 65 | 37 | 47 | 12 | 0,840 |
| 47 T 10/36-6F | 36 | 114,59 | 112,75 | 119 | 70 | 37 | 47 | 16 | 1,070 |
| 47 T 10/40-6F | 40 | 127,32 | 125,45 | 131 | 80 | 37 | 47 | 16 | 1,320 |
| 47 T 10/44-6 | 44 | 140,06 | 138,20 | — | 88 | 37 | 47 | 16 | 1,610 |
| 47 T 10/48-6 | 48 | 152,79 | 150,95 | — | 95 | 37 | 47 | 16 | 1,930 |
| 47 T 10/60-6 | 60 | 190,99 | 189,10 | — | 110 | 37 | 47 | 16 | 3,000 |

POLIAS T10 50

Faça download de nossos desenhos padrões.



| T10 50 Referência | Número de Dentes | Dp | De | Df | Dm | F | L | d | Peso kg |
|----------------------|---------------------|--------|--------|-----|-----|----|----|----|------------|
| 66 T 10/18-6F | 18 | 57,30 | 55,45 | 60 | 40 | 56 | 66 | 10 | 0,420 |
| 66 T 10/19-6F | 19 | 60,48 | 58,60 | 66 | 44 | 56 | 66 | 10 | 0,470 |
| 66 T 10/20-6F | 20 | 63,66 | 61,80 | 66 | 46 | 56 | 66 | 12 | 0,520 |
| 66 T 10/22-6F | 22 | 70,03 | 68,15 | 75 | 52 | 56 | 66 | 12 | 0,570 |
| 66 T 10/24-6F | 24 | 76,39 | 74,55 | 83 | 58 | 56 | 66 | 12 | 0,730 |
| 66 T 10/25-6F | 25 | 79,58 | 77,70 | 83 | 60 | 56 | 66 | 12 | 0,770 |
| 66 T 10/26-6F | 26 | 82,76 | 80,90 | 87 | 60 | 56 | 66 | 12 | 0,820 |
| 66 T 10/27-6F | 27 | 85,94 | 84,10 | 91 | 60 | 56 | 66 | 12 | 0,940 |
| 66 T 10/28-6F | 28 | 89,13 | 87,25 | 93 | 60 | 56 | 66 | 12 | 0,960 |
| 66 T 10/30-6F | 30 | 95,49 | 93,65 | 97 | 60 | 56 | 66 | 12 | 1,170 |
| 66 T 10/32-6F | 32 | 101,86 | 100,00 | 106 | 65 | 56 | 66 | 12 | 1,300 |
| 66 T 10/36-6F | 36 | 114,59 | 112,75 | 119 | 70 | 56 | 66 | 16 | 1,640 |
| 66 T 10/40-6F | 40 | 127,32 | 125,45 | 131 | 80 | 56 | 66 | 16 | 2,000 |
| 66 T 10/44-6 | 44 | 140,06 | 138,20 | — | 88 | 56 | 66 | 16 | 2,360 |
| 66 T 10/48-6 | 48 | 152,79 | 150,95 | — | 95 | 56 | 66 | 16 | 2,830 |
| 66 T 10/60-6 | 60 | 190,99 | 189,10 | — | 110 | 56 | 66 | 16 | 4,370 |